

8 7 6 5 4 3 2 1

D

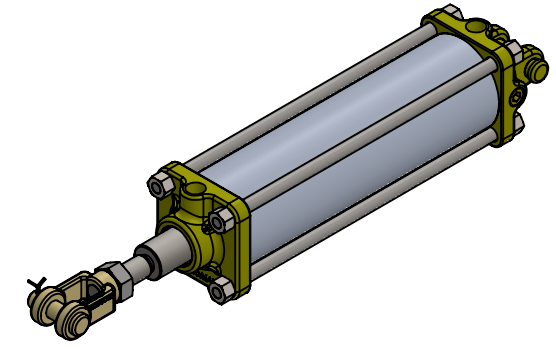
NITRIDED 10V45 STEEK
PISTON ROD

STAINLESS STEEL
NUTS & TIE RODS

5/8-18 UNF
x 1.95" LONG

Ø 1.00
ROD

YELLOW ZINC
PLATED, CAST IRON
END CAPS



C

Ø 0.50 PIN

5/8-18 JAM NUT

1/4" NPT PORTS
POSITION #1

Ø 0.50 PIN

1.25

0.55

Ø 2.50
BORE

Ø 2.75
TUBE OD

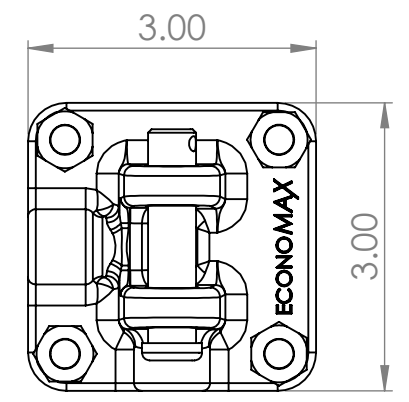
0.81

1.69

8.00 STROKE

13.32 PIN TO SHOULDER

16.52 PIN TO PIN



B

B

ECONOMAX AIR CYLINDER
2-1/2" BORE x 8.0" STROKE
1" NITRIDE ROD WITH 5/8"-18 MALE THREAD
1/4" NPT PORTS POS. #1
CAP FIXED CLEVIS MOUNT W/ 1/2" PIN ZY-CP-230
ROD CLEVIS BDC-061-1/2P/ZD CLEVIS W.1/2" PIN
A = MALE THREAD ON ROD = 1.950" LONG
INCLUDES 5/8-18 JAM NUT

PIN TO PIN = 16.52"
PIN TO SHOULDER = 13.32"

UNLESS OTHERWISE SPECIFIED:
DIMENSIONS ARE IN INCHES
REMOVE BURRS, BREAK SHARP EDGES R.010
ANGULAR: MACH ± .5 DEGREES
ONE PLACE DECIMAL ± .02
TWO PLACE DECIMAL ± .01
THREE PLACE DECIMAL ± .005
MACHINED SURFACE FINISH



THIRD ANGLE PROJECTION

MATERIAL
FINISH
DO NOT SCALE DRAWING



THE INFORMATION CONTAINED IN THIS DRAWING IS THE
SOLE PROPERTY OF HIGGINSON EQUIPMENT INC. ANY
REPRODUCTION IN PART OR AS A WHOLE WITHOUT THE
WRITTEN PERMISSION OF HIGGINSON EQUIPMENT INC.
IS STRICTLY PROHIBITED

PART NUMBER: EA7S080A1N111NS-13.32
DESCRIPTION:
EA7S080A1N111NS-13.32
ECONOMAX
2.5" BORE X 8" STROKE

SIZE **B** DWG. NO. REV **0**

SCALE: 1:5 WEIGHT: 8.56 SHEET 1 OF 1

8 7 6 5 4 3 2 1

A

A