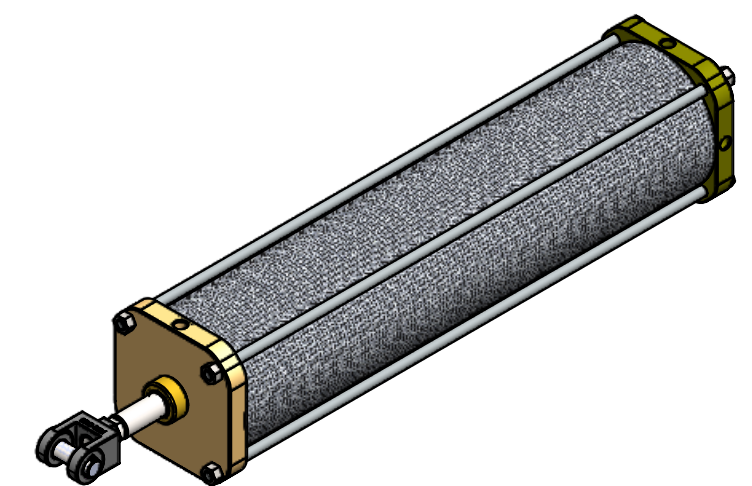


STELMI CHROME PLATED
10V45 STEEL PISTON ROD

STAINLESS STEEL
NUTS & TIE RODS



1-14 UNS
x 1.63" LONG

Ø 1.38
ROD

YELLOW ZINC
PLATED, STEEL
END CAPS

1/2" NPT PORTS
POSITION #1

Ø 8.00
BORE

Ø 8.38
TUBE OD

1.51
2.99

Ø 1.00 PIN

29.00 STROKE

33.00 (STROKE + 4" STOP TUBE)

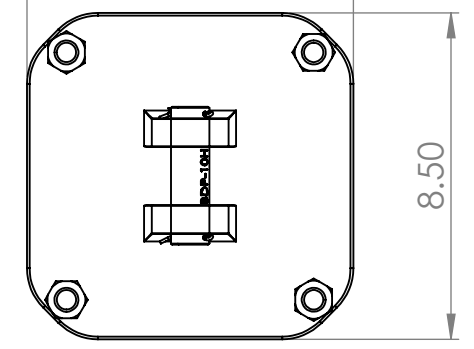
43.19 PIN TO SHOULDER

46.13 PIN TO PIN

3.01
1.51

Ø 1.00 PIN

8.50

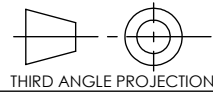


8.50

ECONOMAX AIR CYLINDER
C/W COMPOSITE TUBE
8" BORE X 33" STROKE
1-3/8" STELMI ROD WITH 1"-14 MALE ROD THREAD
C/W BDC-10M ROD CLEVIS
1/2 NPT PORTS POSITION 1, NO CUSHIONS
MP1 MOUNT - CAP FIXED CLEVIS WITH 1" PIN
X = 4" STOP TUBE FOR 29" NET STROKE

PIN TO PIN = 46.125"
PIN TO SHOULDER = 43.188"

UNLESS OTHERWISE SPECIFIED:
DIMENSIONS ARE IN INCHES
REMOVE BURRS, BREAK SHARP EDGES R.010
ANGULAR: MACH ± .5 DEGREES
ONE PLACE DECIMAL ± .02
TWO PLACE DECIMAL ± .01
THREE PLACE DECIMAL ± .005
MACHINED SURFACE FINISH



MATERIAL
FINISH
DO NOT SCALE DRAWING



PROPRIETARY AND CONFIDENTIAL

THE INFORMATION CONTAINED IN THIS DRAWING IS THE
SOLE PROPERTY OF HIGGINSON EQUIPMENT INC. ANY
REPRODUCTION IN PART OR AS A WHOLE WITHOUT THE
WRITTEN PERMISSION OF HIGGINSON EQUIPMENT INC.
IS STRICTLY PROHIBITED

PART NUMBER: EC8S330F1N097NX

DESCRIPTION:
EC8S330F1N097NX

SIZE B	DWG. NO.	REV 0
---------------	----------	--------------

SCALE: 1:5 WEIGHT: 112.23 SHEET 1 OF 1